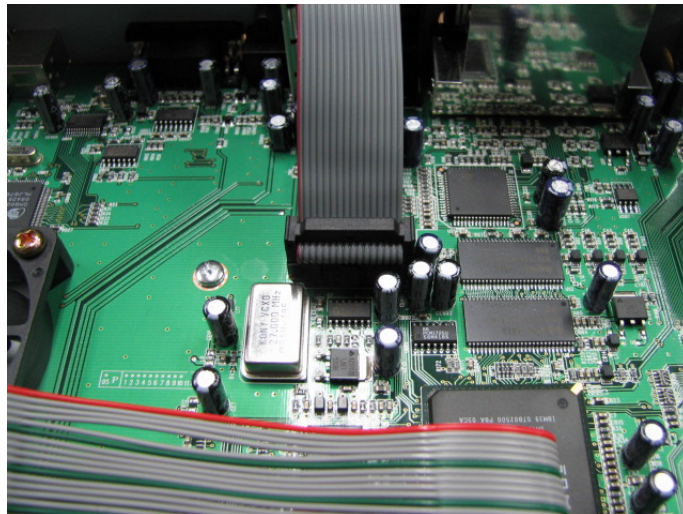
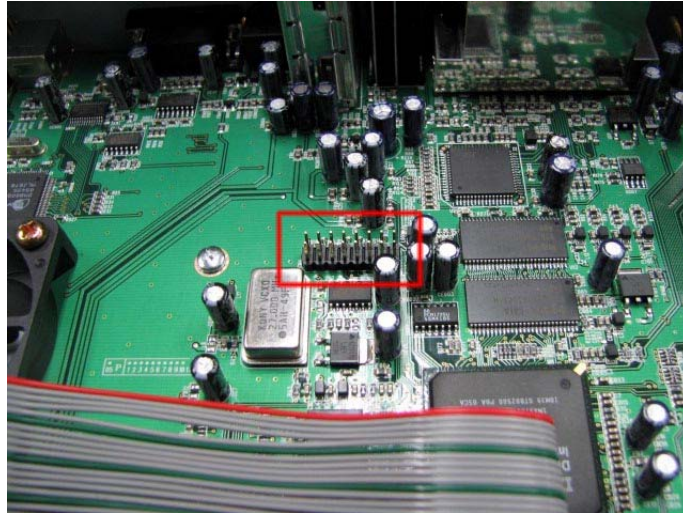
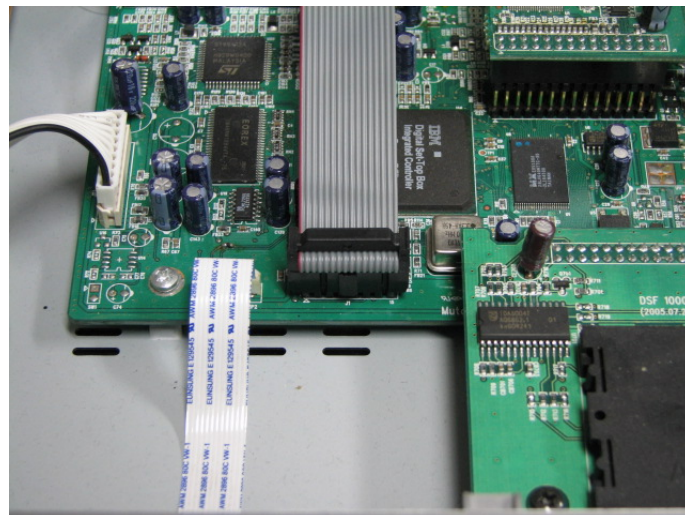
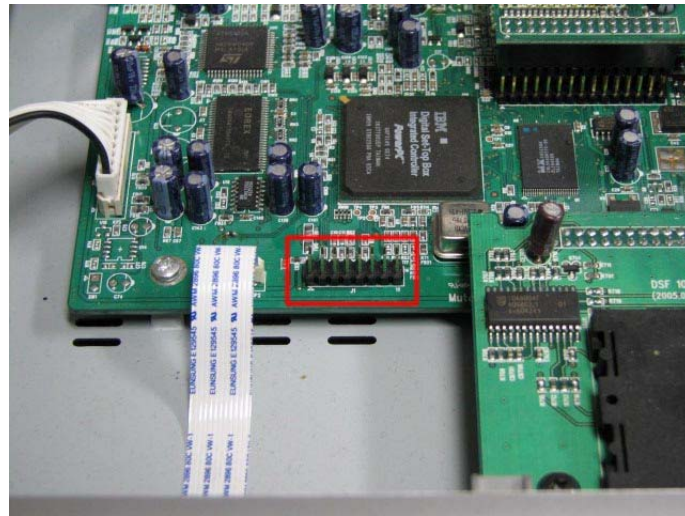


1. Unzip downloaded file to local directory. For example C:\jtag.
2. Check if there are 4 files : jtag.exe, WinIO.vxd, WinIO.dll, WinIO.sys
3. **Turn off STB.**
4. Connect jtag connector to STB main board.
 - 4.1. relook400 jtag connector



- 4.2. mutant200 jtag connector



5. Turn on STB
6. Go to "Start → Run..." on PC. And run `cmd` command. You will see command window(black screen).
7. Go to jtag directory.
`cd c:\jtag`
8. If you run `jtag` or `jtag -h`, you can see all command options.
9. Run jtag command with valid option.
 - 9.1. relook400s (with PAL)
`jtag -m relook400s`
 - 9.2. relook400s with NTSC
`jtag -m relook400s -o ntsc`
 - 9.3. mutant200s (with PAL)
`jtag -m mutant200s`
10. Please wait "Complete !" message.